



## avantgarde

### Delphi for Palm OS

In the year 2000, I wrote an astrology program called *Delphi* for Palm OS handheld devices, which not only allowed to display horoscope charts, but also to tap on shown elements, for example, in order to show only aspects to a certain planet. In order to calculate planetary positions and to get coordinates and time zones for places world-wide, I wrote an astrological software library called *astrolib* to go with Delphi.

Moreover, in the about screen of Delphi, I placed cryptographic hashes and digital signatures in order to be later able to prove that I had already formulated certain ideas at the time.

### Details

Delphi and astrolib were first published 7 October 2000. The initial versions of Delphi were black and white and astrolib contained information for about 350 locations around the world. In 2001, first support for synastry relationship charts followed, then color charts and in astrolib data for about 2000 additional locations world-wide.

The screen resolution available to Delphi was only  $160 \times 160$  pixels:

**Delphi** Sample Chart

☉ 15♈  
☽ 27♊  
☿ 28♈  
♀ 28♈  
♂ 23♈  
♄ 10♊  
♅ 1♈  
♁ 29♈  
♂ 17♈  
♂ 25♊  
♂ 2♈  
♂ 15♈  
♂ 26♈

**Delphi** ▼ Unfiled

**Name:** Sample Chart ▼ \*

**Date:** 5 ▼ May 2155 year

**Time:** ▼ 05 [5 am] 55 min

**Country:** United States ▼

**City:** New York ▼

**Timezone:** -4 [EDT]

**Position:** 40n43 74w00

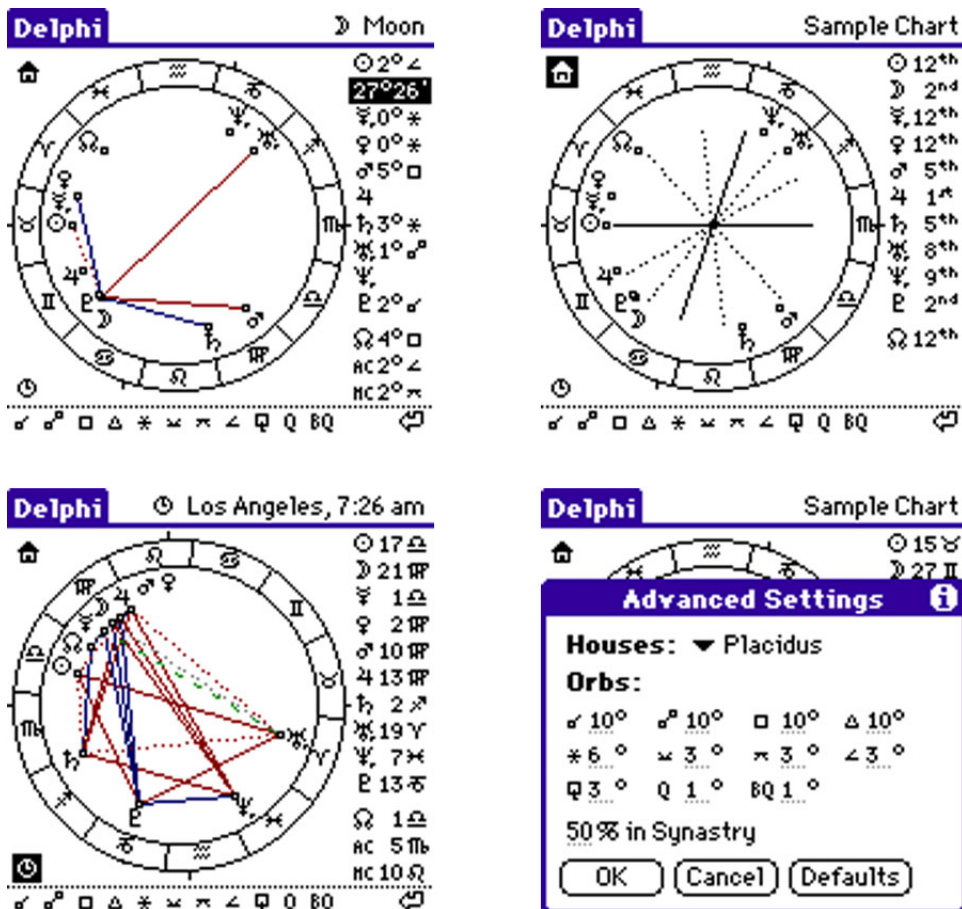
☐ Private

In order to still be able to display a lot of useful information, it was possible to tap on practically all visible items on the screen:

- Planets in the chart or in the list to the right, to show for example only aspects to the Moon and to show its position with arc minutes in the list.
- Aspects, to show for example only squares.

- Star signs, for example, to show only planets in Leo.
- The house symbol in the upper left corner, to switch to a view with houses instead of aspects.
- Houses, to show only planets in a certain house, as well as the the position of the house cusp.
- The clock symbol in the lower left corner, to display a chart for the current time, for a selectable location and time zone.
- The name in the top right corner, to edit birth data.

Preferences allowed to define orbs and to select a house system (Placidus, Koch or no houses). It was even possible to “beam” charts between devices using the integrated infrared beamers. Some more screen shots:



Delphi was relatively successful, many thousands of downloads. I once saw an astrologer who used it on his PalmPilot and it also appeared on several CDs that often came with magazines at the time. In the book *"PalmPilot and Palm Organizers! I Didn't Know You Could Do That..."*, Second Edition, by Neil J. Salkind, 2001, Delphi is mentioned in the book and Delphi 1.21 is included on the accompanying CD.

A few technical details: Delphi used routines I wrote myself in order to draw circles, as well as dashed and dotted lines, because the former, as provided by the OS, were too slow, and the latter did not exist at all. Astrolib compressed Unix tz data a lot in order to remain compact and since the memory stack was so

small, some astrolib functions had to use static variables instead of parameters and local variables.

Hidden in the about screens of Delphi, I placed cryptographic hashes and digital signatures of some of my own original works about the world, including astrology, which I had not yet published at the time. In the three images below, each time the Apollon temple at Delphi in Greece is shown, but the apparently noisy underground differs each time and contains the respective cryptographic hashes and digital signatures:



© 2000.

delphi29@excite.com

jove.prohosting.com/~delphi29



© 2000-2001.

delphi29@excite.com

jove.prohosting.com/~delphi29



© 2000-2002.

delphi29@excite.com

jove.prohosting.com/~delphi29

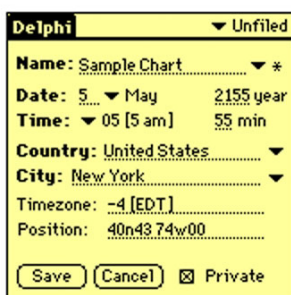
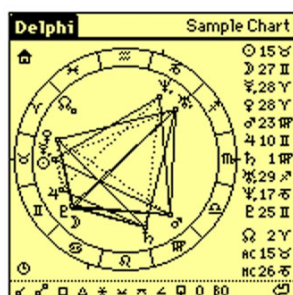
Here is the web site for Delphi at the time. By the way, the image at the top shows the temple of Athena Pronoia at Delphi:

### Welcome to Delphi



### Delphi 2.01

Delphi is a free, accurate and intuitive astrology program for Palm OS devices\*. It lets you create, view, organize and beam birth charts and view synastry charts.



- View manual online...
- Read a detailed account of Delphi's accuracy...
- Download Delphi packaged for Windows ...
- Download Delphi packaged for Macintosh...
- Previous versions are still available...

\*requires Palm OS 3.5 or later.

### astrolib 1.03

The astrolib library calculates planetary positions and time zones.

Positions of sun, moon and planets up to Pluto are calculated with an accuracy of the order of one arc minute for dates less than a century away from now. Time zones and other information for about 350 locations on earth are retrieved from UNIX time zone data. About 2000 additional locations are linked to UNIX time zone locations.

The source code is distributed under the GNU Lesser General Public License.

- View the documentation online or download the source...
- Download astrolib packaged for Windows...
- Download astrolib packaged for Macintosh...